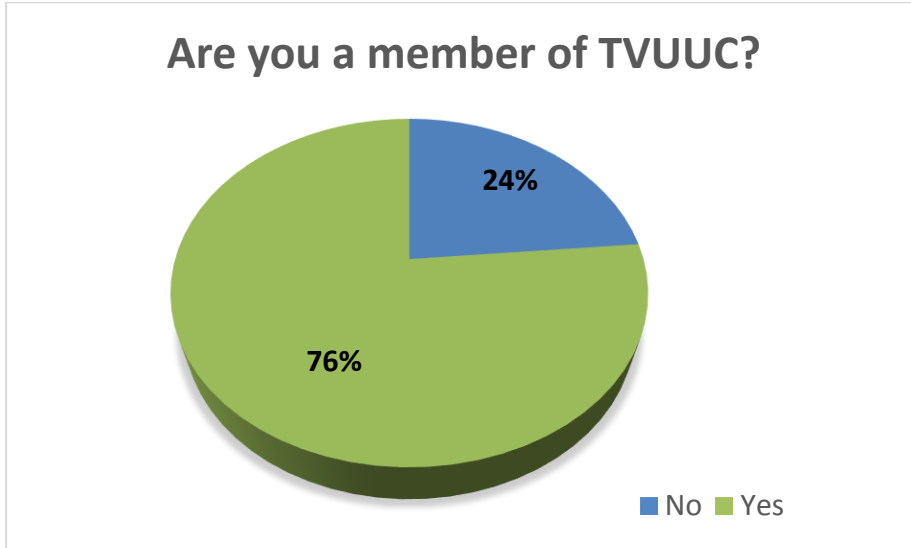


Summary

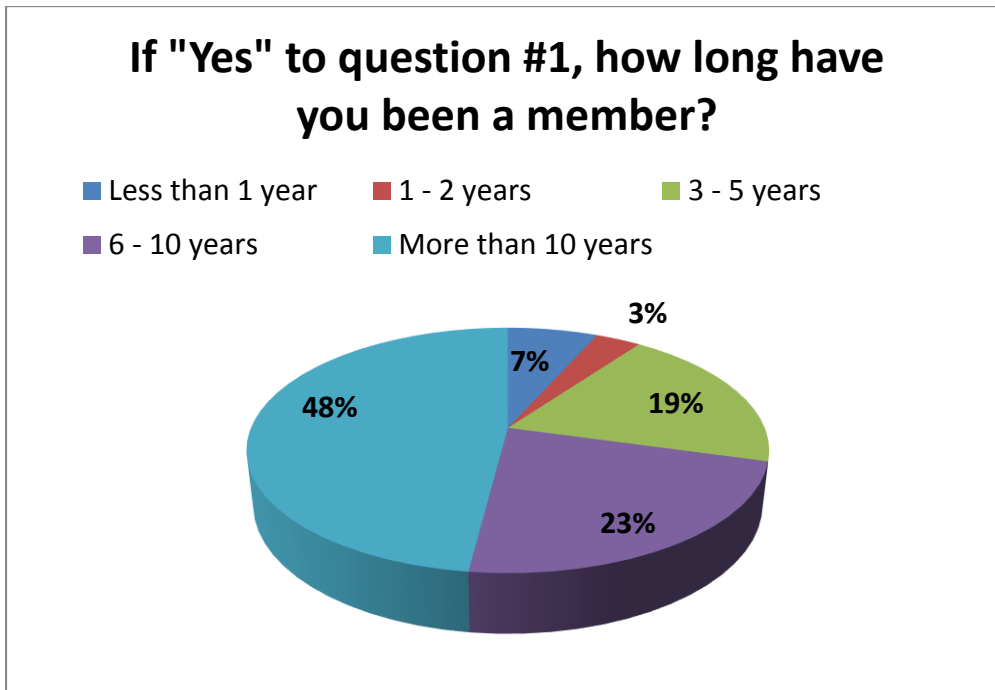
A. Information About You

Are you a member of TVUUC?



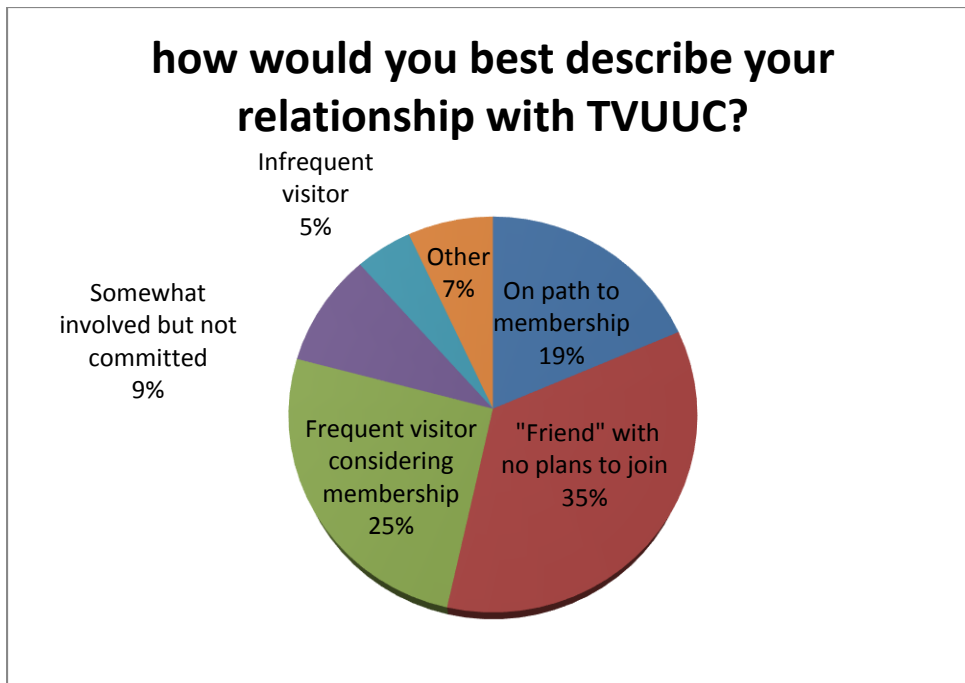
Yes	148	77%
No	45	23%

If "Yes" to question #1, how long have you been a member?



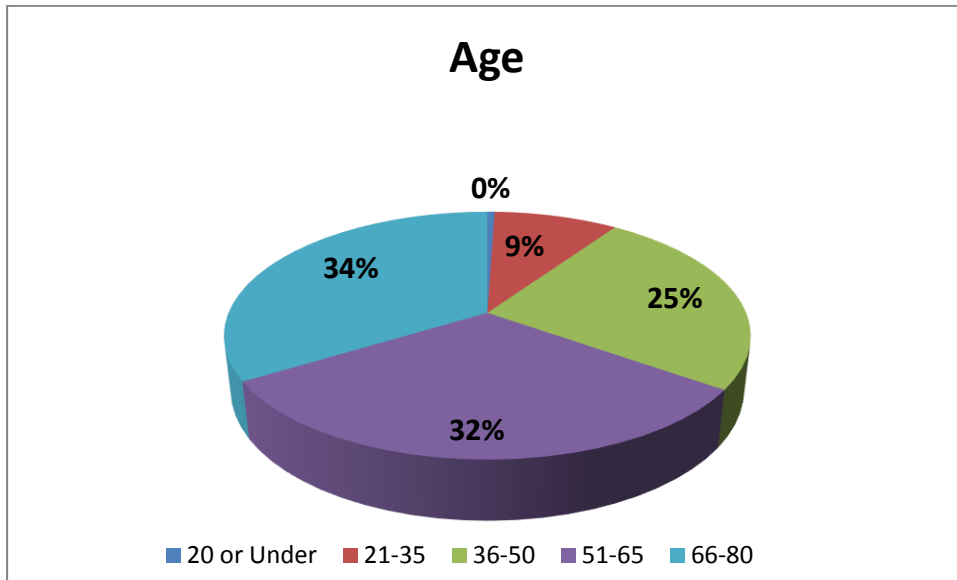
Less than 1 year	10	7%
1 - 2 years	5	3%
3 - 5 years	29	19%
6 - 10 years	34	23%
More than 10 years	72	48%

If "No" to question # 1, how would you best describe your relationship with TVUUC?



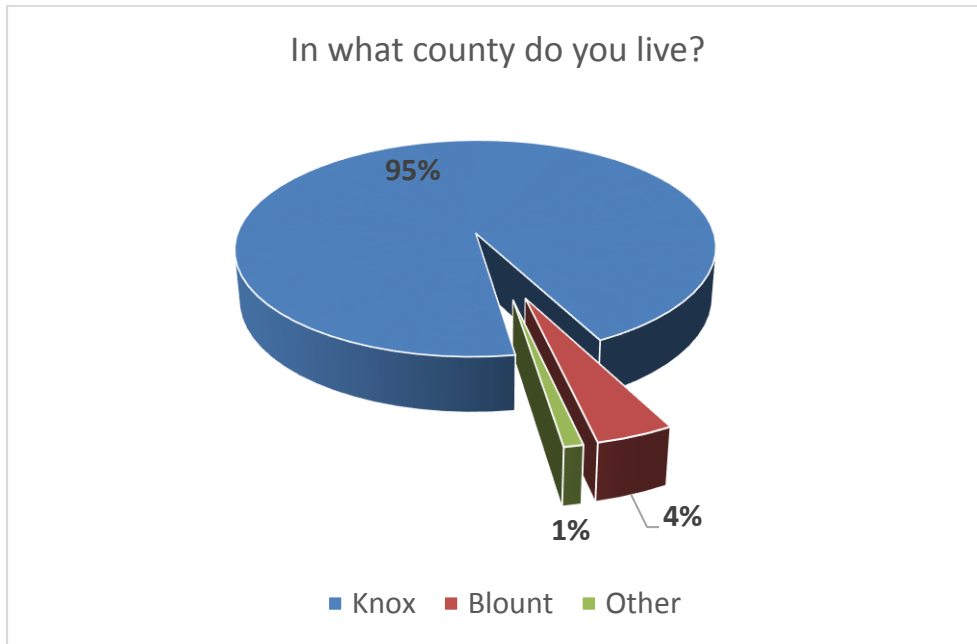
On path to membership	8	19%
"Friend" with no plans to join	15	35%
Frequent visitor considering membership	11	26%
Somewhat involved but not committed	4	9%
Infrequent visitor	2	5%
Other	3	7%

Please indicate your age.



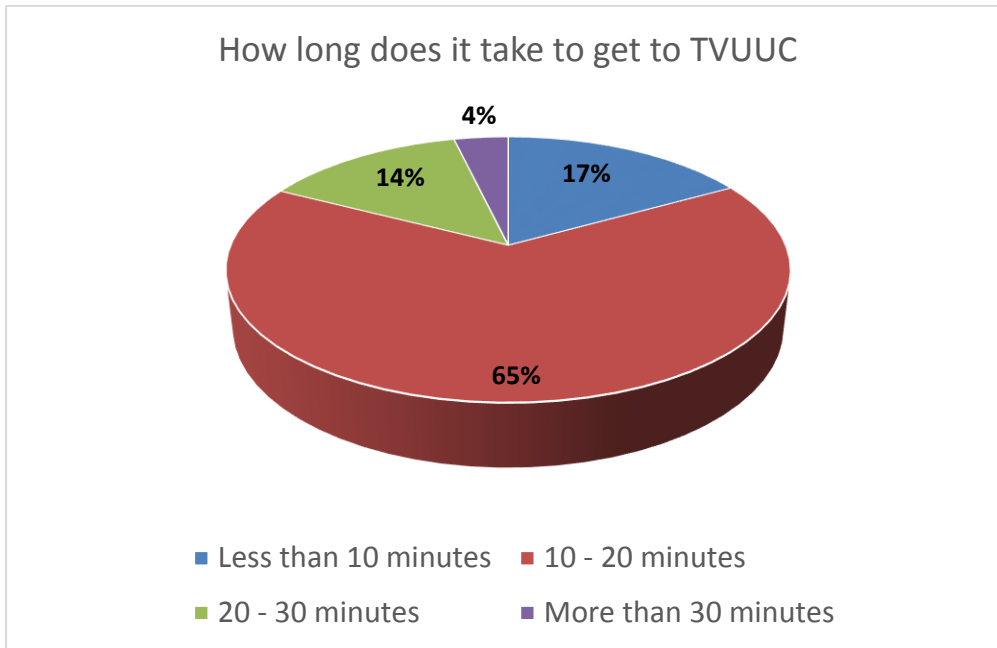
20 or Under	1	1%
21-35	17	9%
36-50	47	25%
51-65	59	31%
66-80	63	33%
Over 80	4	2%

In what county do you live?



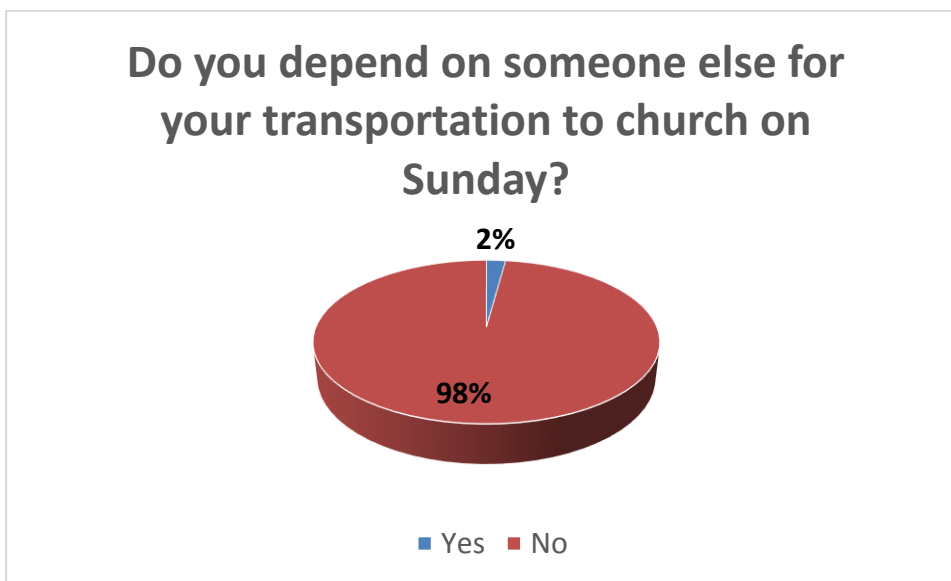
Knox	180	94%
Blount	8	4%
Sever	0	0%
Loudon	1	1%
Anderson	1	1%
Union	0	0%
Other	2	1%

Approximately how long does it take you to get to TVUUC on Sunday morning?



Less than 10 minutes	32	17%
10 - 20 minutes	124	66%
20 - 30 minutes	26	14%
More than 30 minutes	7	4%

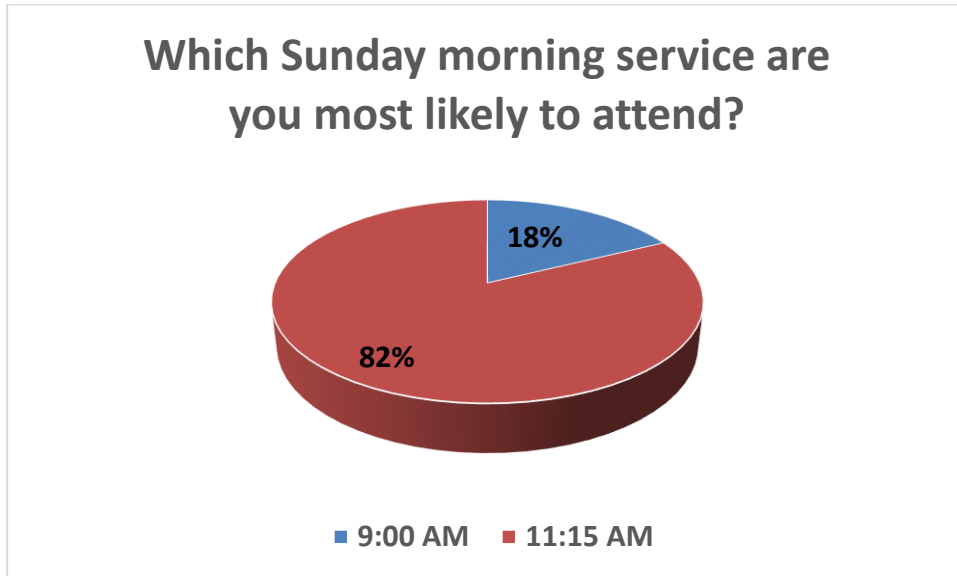
Do you depend on someone else for your transportation to church on Sunday?



Yes	4	2%
No	184	97%

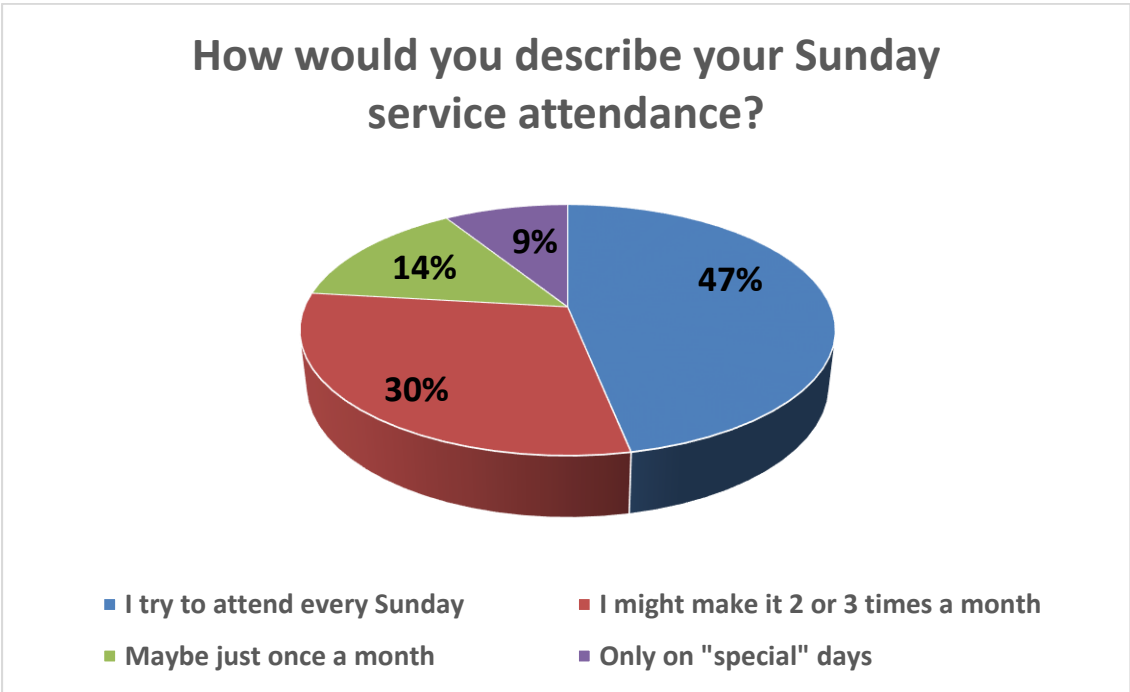
Sometimes	2	1%
-----------	---	----

Which Sunday morning service are you most likely to attend?



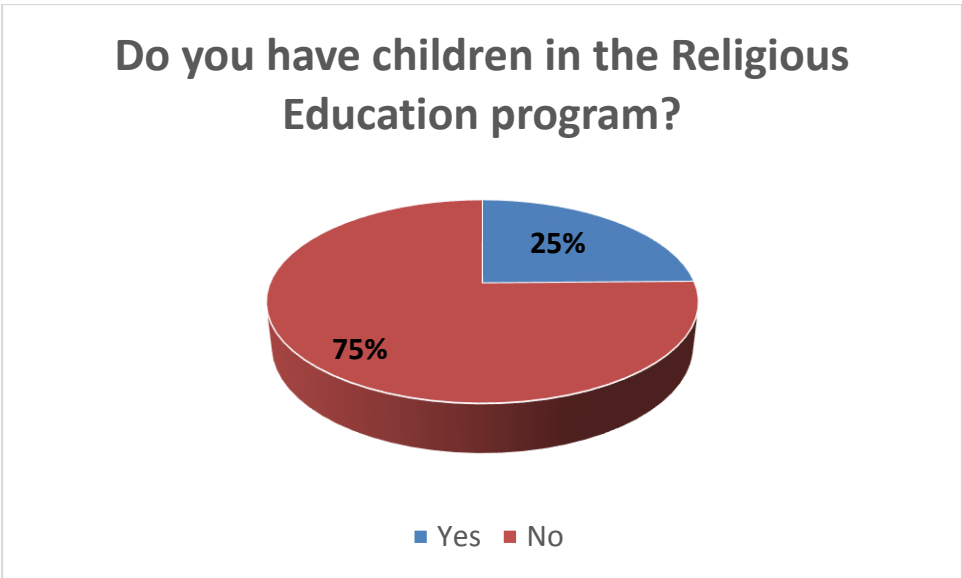
9:00 AM	33	18%
11:15 AM	153	82%

How would you describe your Sunday service attendance?



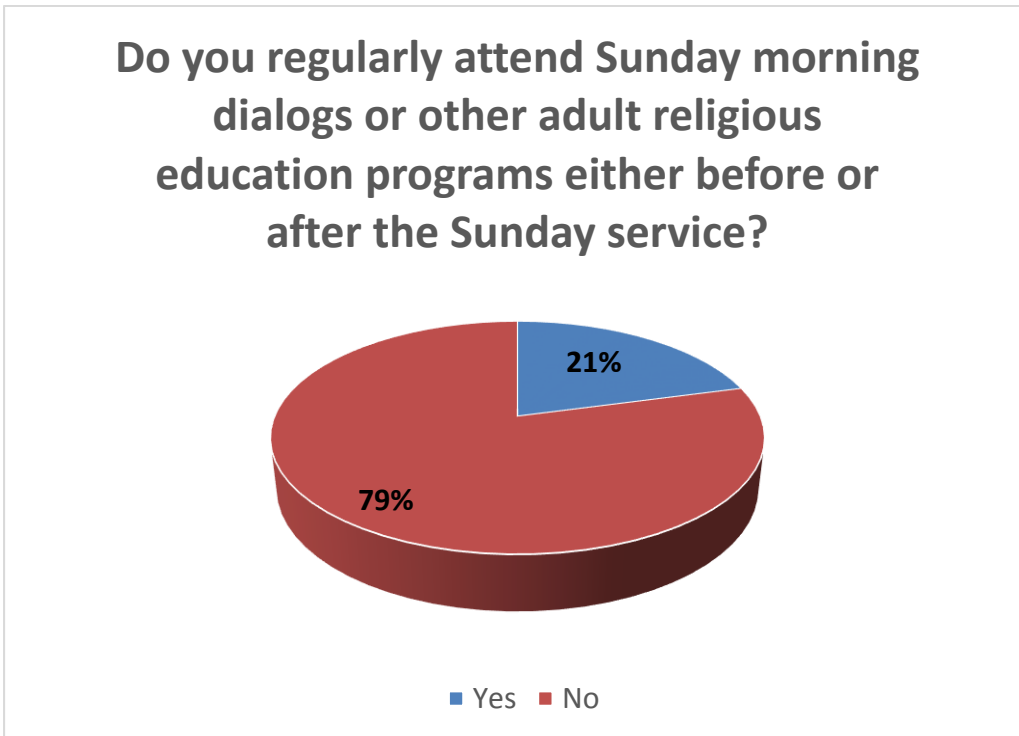
I try to attend every Sunday	89	47%
I might make it 2 or 3 times a month	57	30%
Maybe just once a month	27	14%
Only on "special" days	17	9%

Do you have children in the Religious Education program?



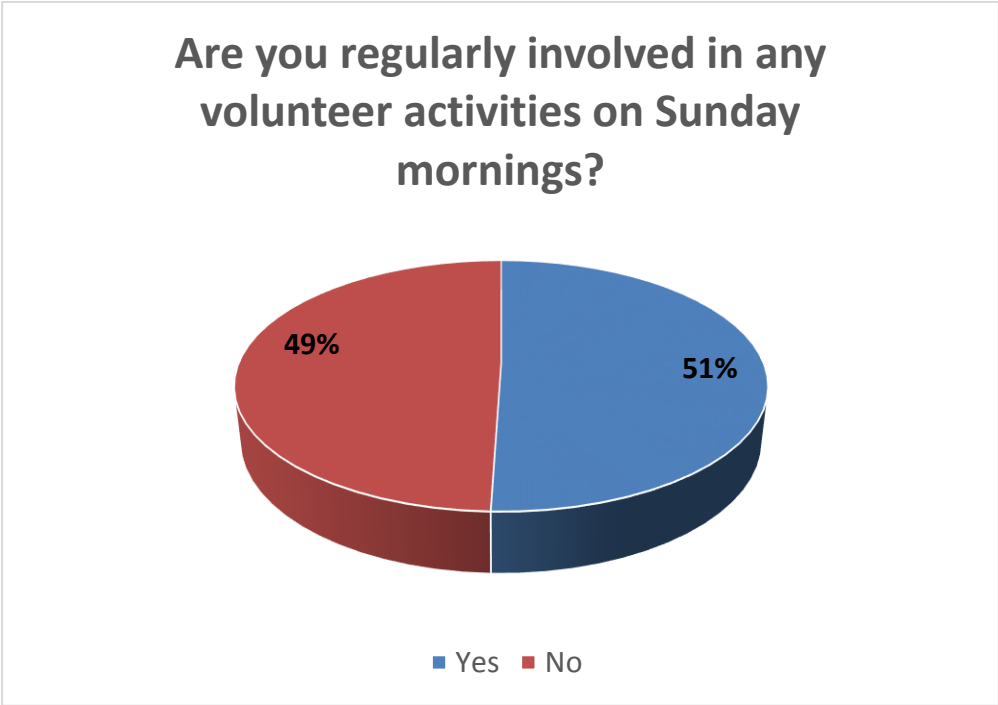
Yes	47	25%
No	143	75%

Do you regularly attend Sunday morning dialogs or other adult religious education programs either before or after the Sunday service?



Yes	40	21%
No	152	79%

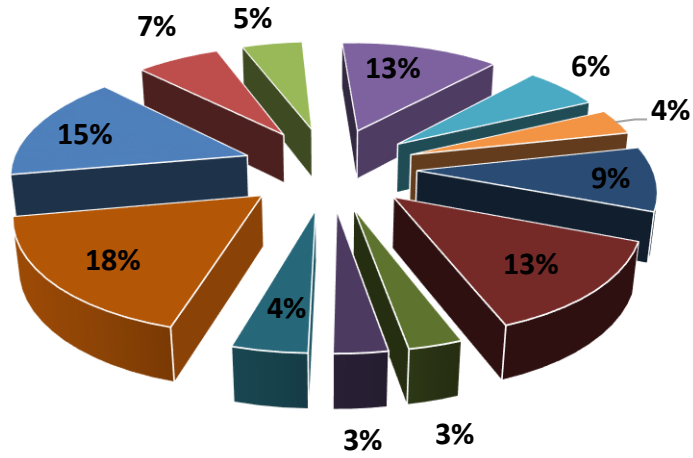
Are you regularly involved in any volunteer activities on Sunday mornings?



Yes	97	51%
No	95	49%

If "Yes" to the previous question, with what volunteer activities might you be involved?

What volunteer activities might you be involved?

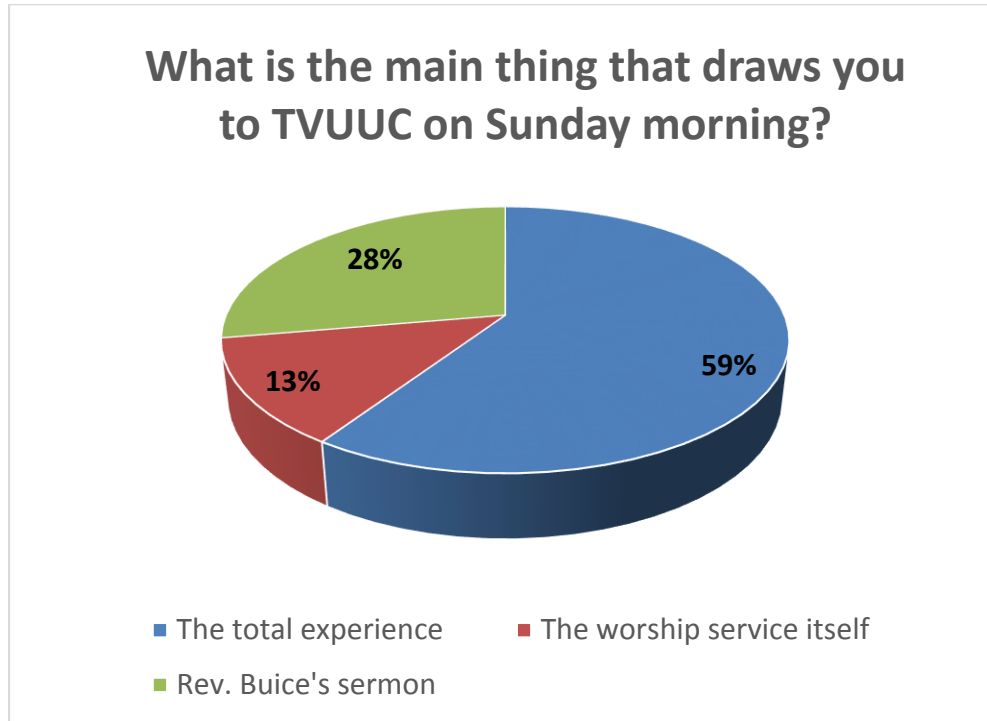


- Ushering
- Welcome Table
- Coffee
- Greeter
- Caring Table
- Flowers
- YRE Teacher
- Choir
- Sound Operator
- Gift Card Program
- Safety Patrol
- Other

Ushering	25	15%
Welcome Table	11	7%
Coffee	8	5%
Greeter	21	13%
Caring Table	10	6%
Flowers	6	4%
YRE Teacher	15	9%
Choir	22	13%
Sound Operator	5	3%
Gift Card Program	5	3%
Safety Patrol	7	4%
Other	29	18%

B. Your Sunday Morning Experience

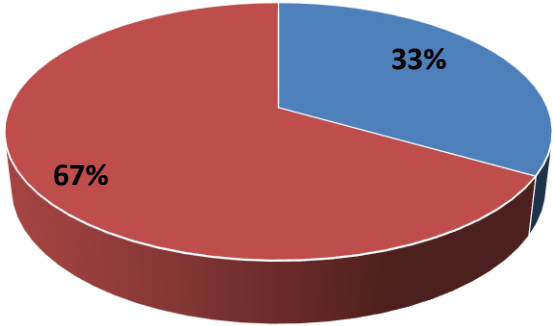
What is the main thing that draws you to TVUUC on Sunday morning?



The total experience	92	49%
The worship service itself	20	11%
Rev. Buice's sermon	43	23%
Youth Religious Education	5	3%
Social Interaction/Potlucks	3	2%
Music	6	3%
Dialogs or other adult RE	9	5%
Volunteer work	3	2%
Other	8	4%

I typically attend just the worship service and rarely stay for anything else

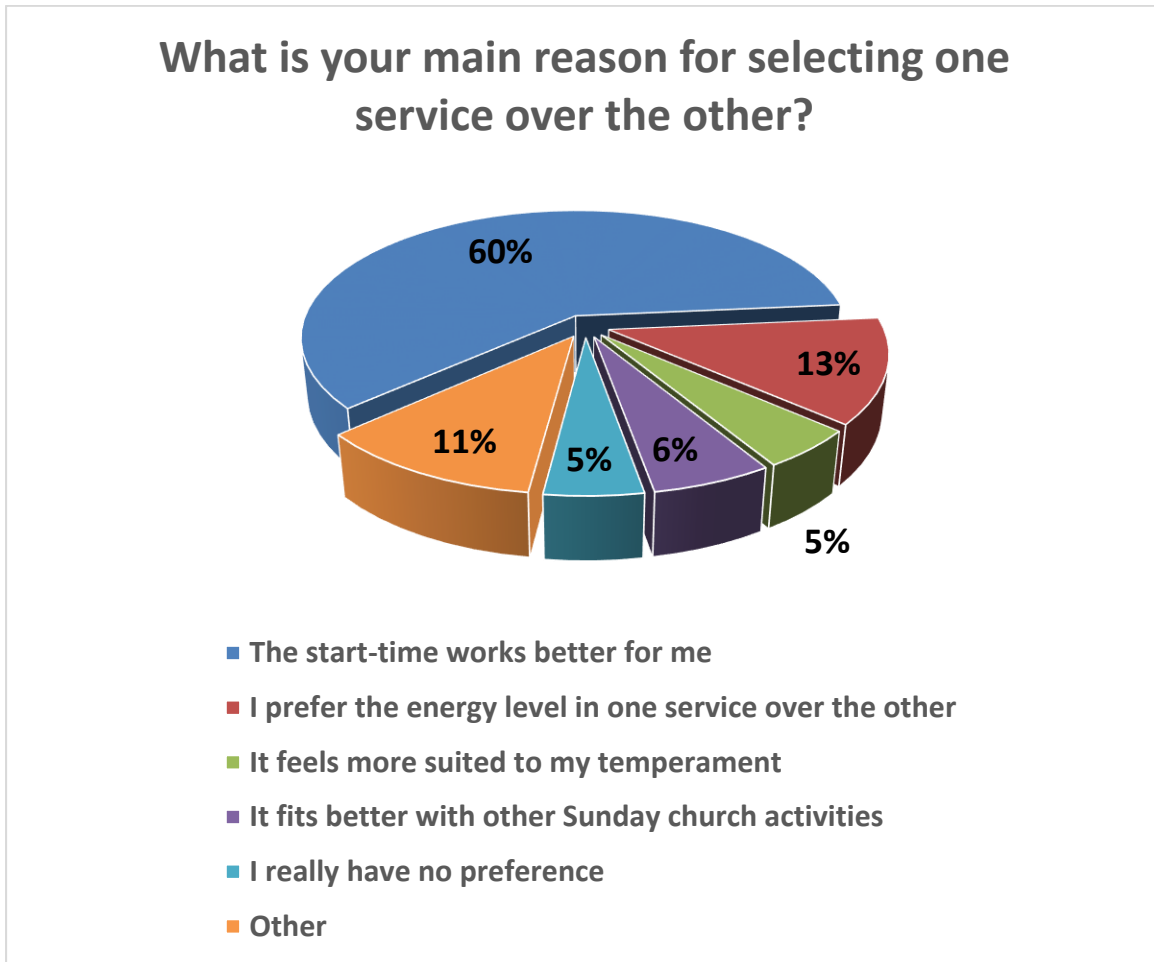
I typically attend just the worship service and rarely stay for anything else



■ Yes ■ No

Yes	63	33%
No	126	67%

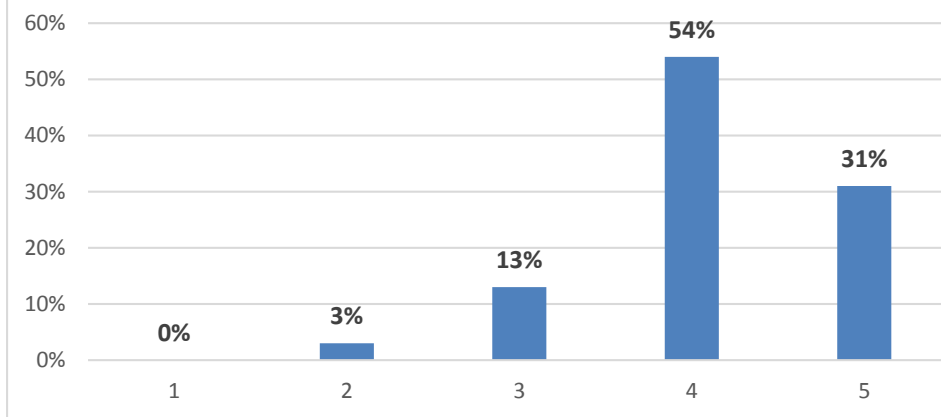
What is your main reason for selecting one service over the other?



The start-time works better for me	112	60%
I prefer the energy level in one service over the other	24	13%
It feels more suited to my temperament	9	5%
It fits better with other Sunday church activities	11	6%
I really have no preference	9	5%
Other	21	11%

How would you rate the overall quality of the worship service you attend?

How would you rate the overall quality of the worship service you attend?

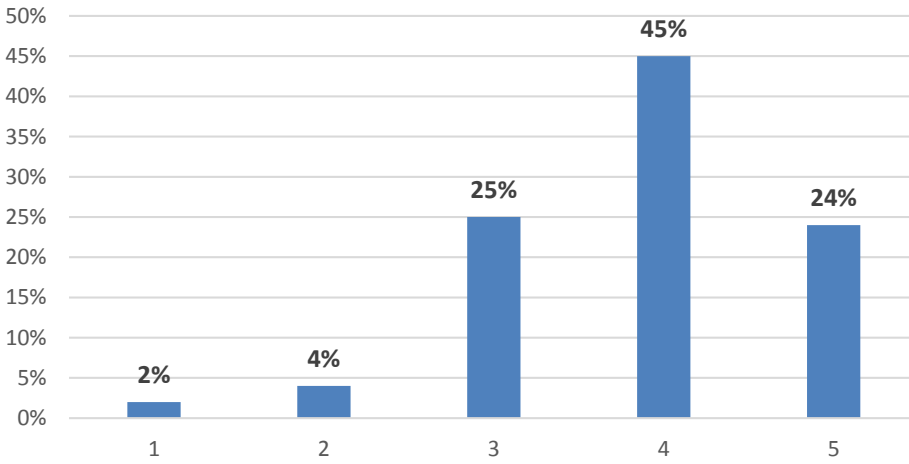


1	0	0%
2	5	3%
3	24	13%
4	99	54%
5	57	31%

Please rate the following aspects of the worship service where 1 is "Poor" and 5 is "Excellent"

Music selection

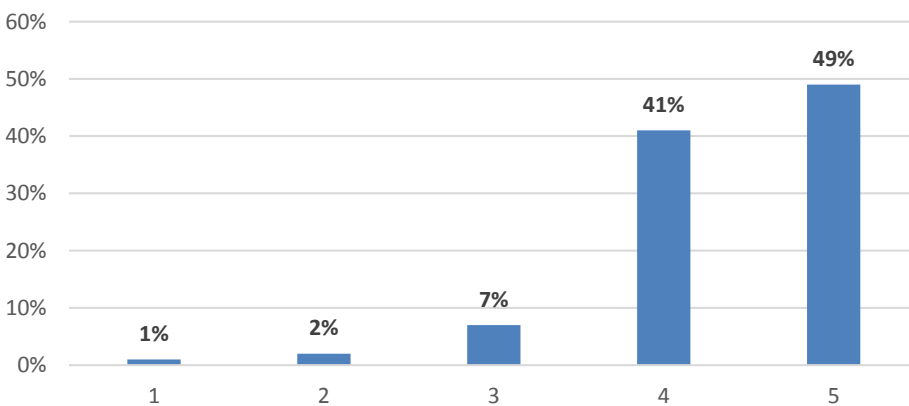
Music selection



1	3	2%
2	8	4%
3	47	25%
4	83	45%
5	44	24%

Music performance whether by choir or others

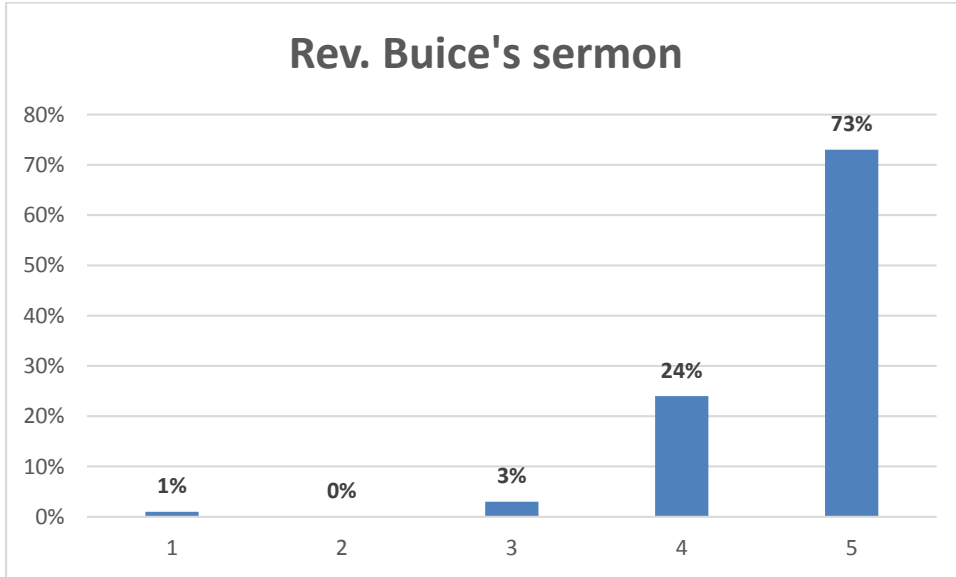
Music performance whether by choir or others



1	1	1%
2	3	2%
3	13	7%

4	75	41%
5	89	49%

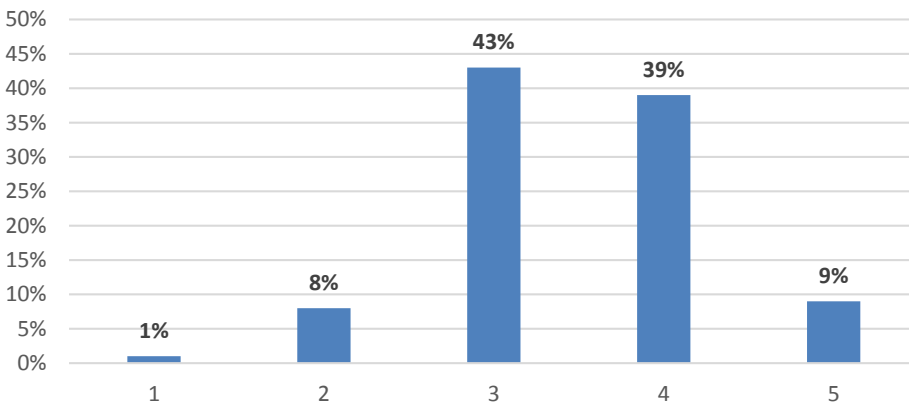
Rev. Buice's sermon



1	1	1%
2	0	0%
3	5	3%
4	44	24%
5	134	73%

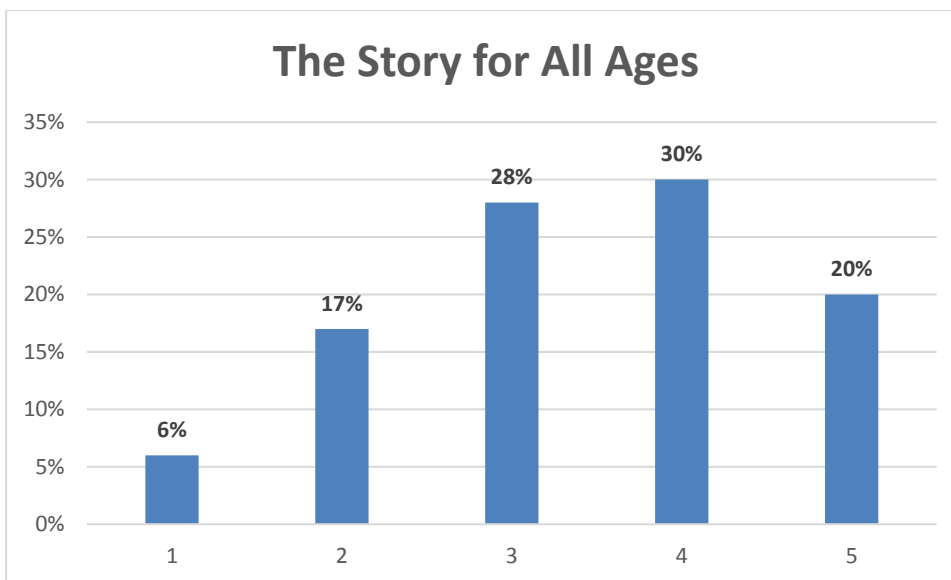
Sermon by someone other than Rev. Buice

Sermon by someone other than Rev. Buice



1	1	1%
2	13	8%
3	74	43%
4	67	39%
5	16	9%

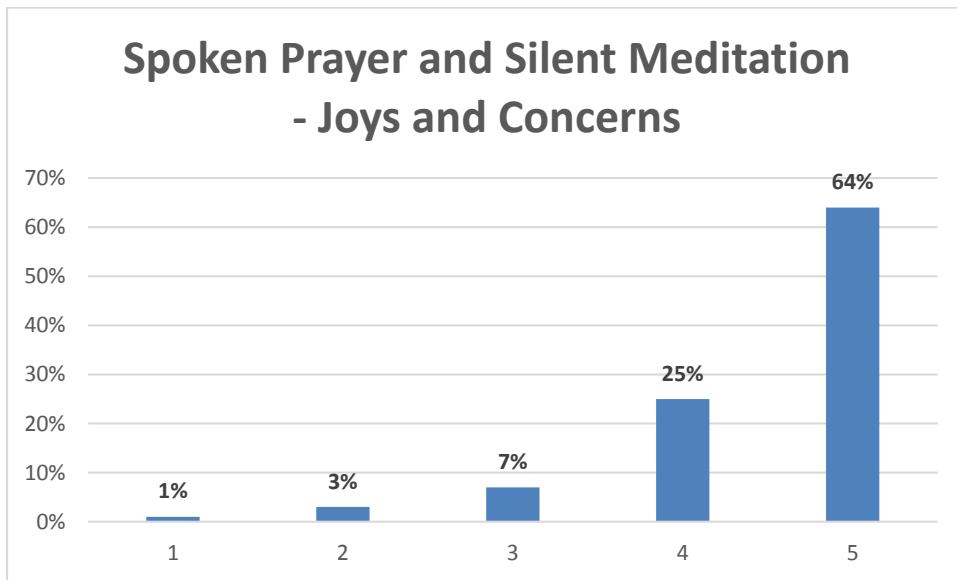
The Story for All Ages



1	11	6%
---	----	----

2	30	17%
3	50	28%
4	53	30%
5	35	20%

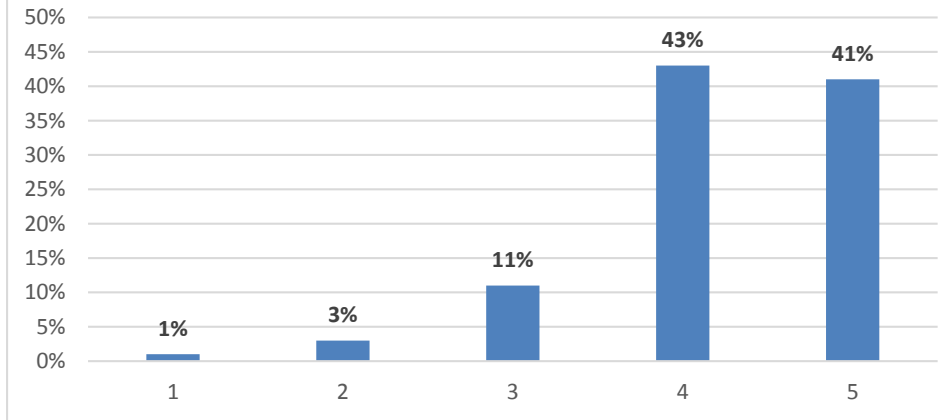
Spoken Prayer and Silent Meditation - Joys and Concerns



1	1	1%
2	6	3%
3	12	7%
4	45	25%
5	116	64%

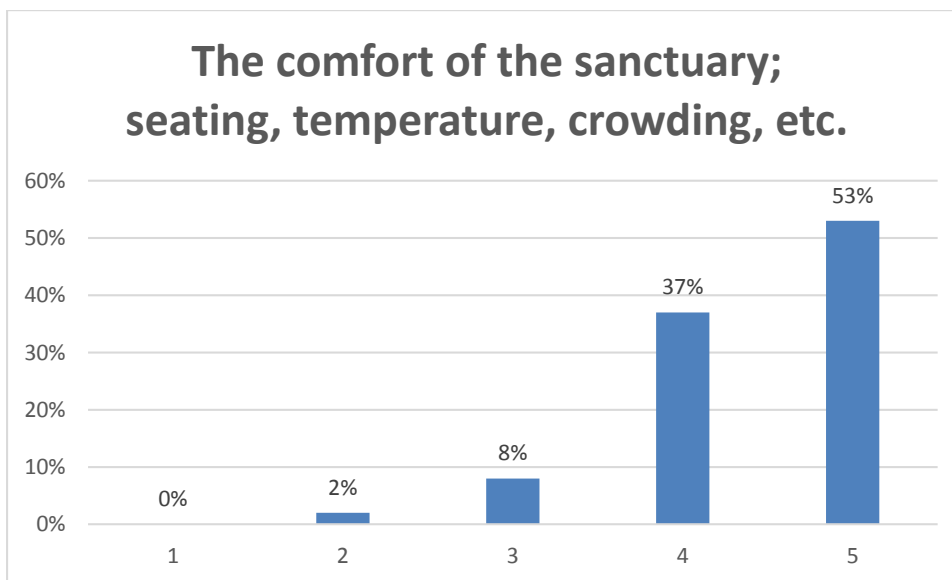
Appearance and Content of the Order of Services

Appearance and Content of the Order of Services



1	2	1%
2	6	3%
3	20	11%
4	78	43%
5	74	41%

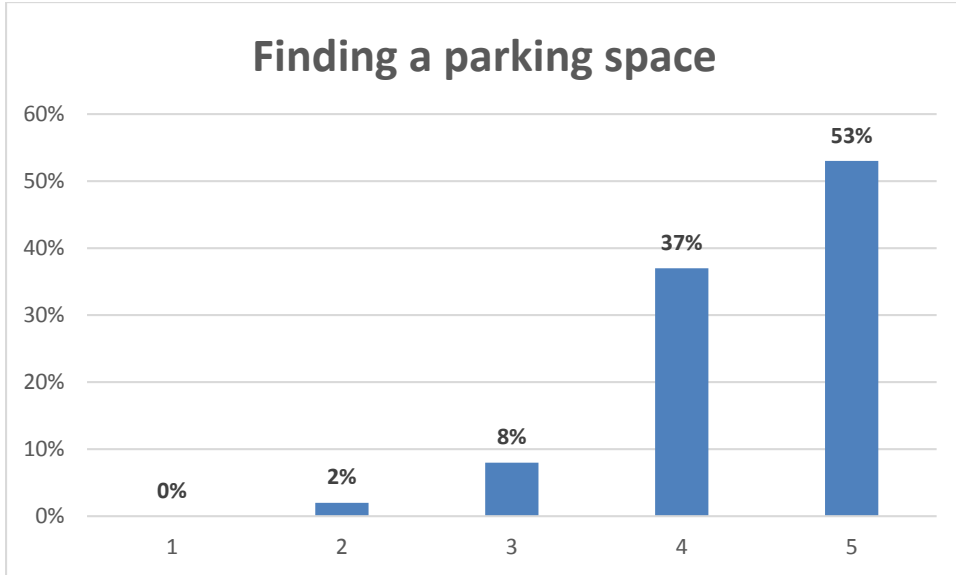
The comfort of the sanctuary; seating, temperature, crowding, etc.



1	1	1%
2	0	0%

3	19	10%
4	85	46%
5	79	43%

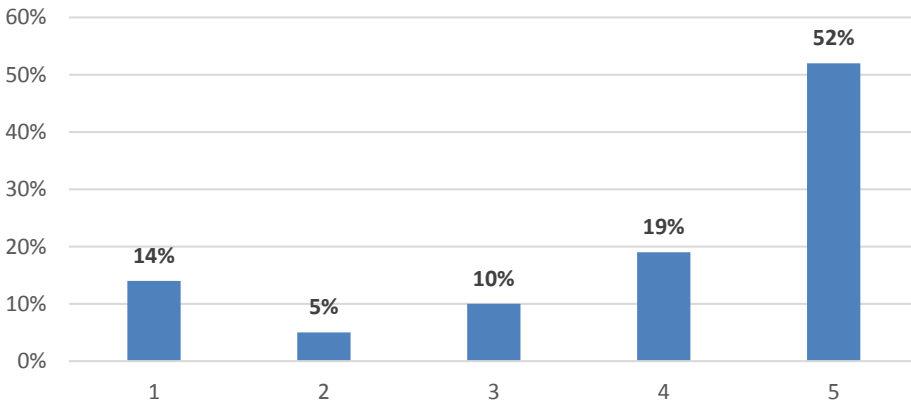
Finding a parking space



1	0	0%
2	4	2%
3	15	8%
4	68	37%
5	97	53%

Finding a mobility challenged parking space - if applicable

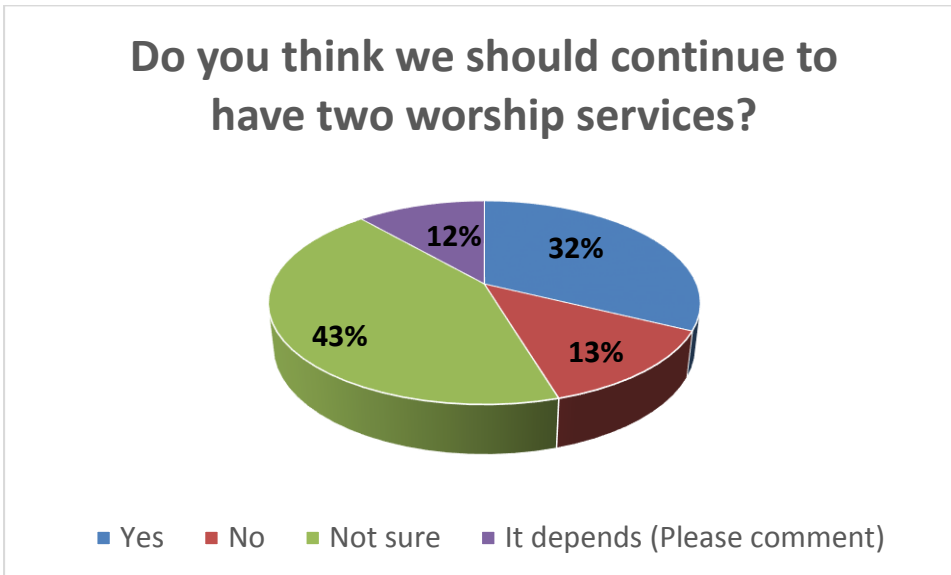
Finding a mobility challenged parking space - if applicable



1	3	14%
2	1	5%
3	2	10%
4	4	19%
5	11	52%

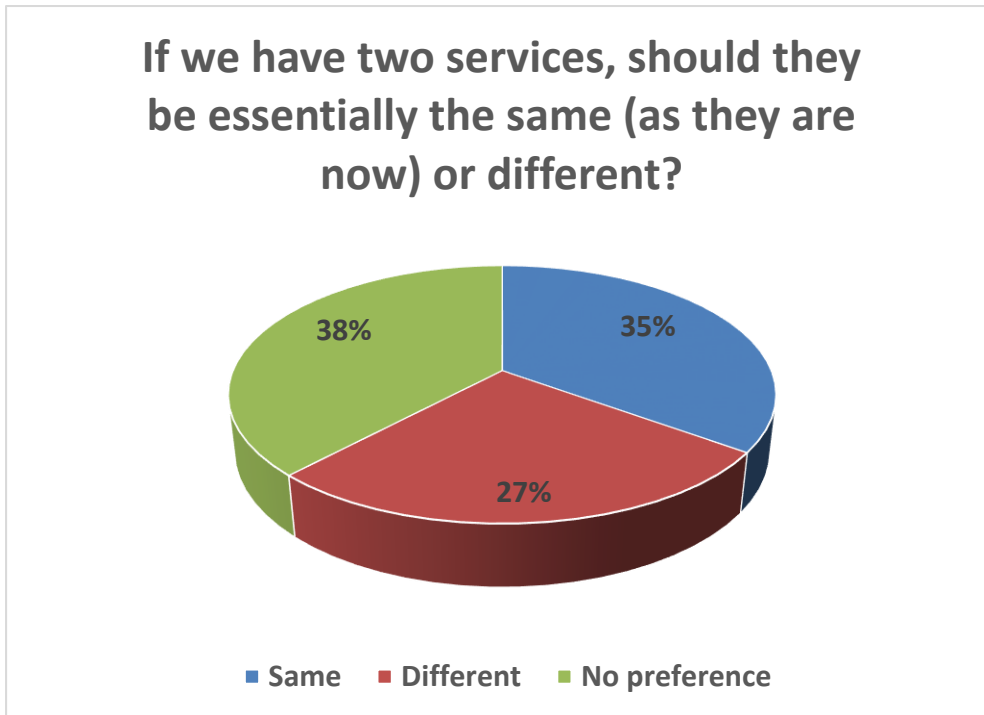
C. Determining If We Need to Make Changes

Do you think we should continue to have two worship services?



Yes	59	32%
No	24	13%
Not sure	79	43%
It depends (Please comment)	21	11%

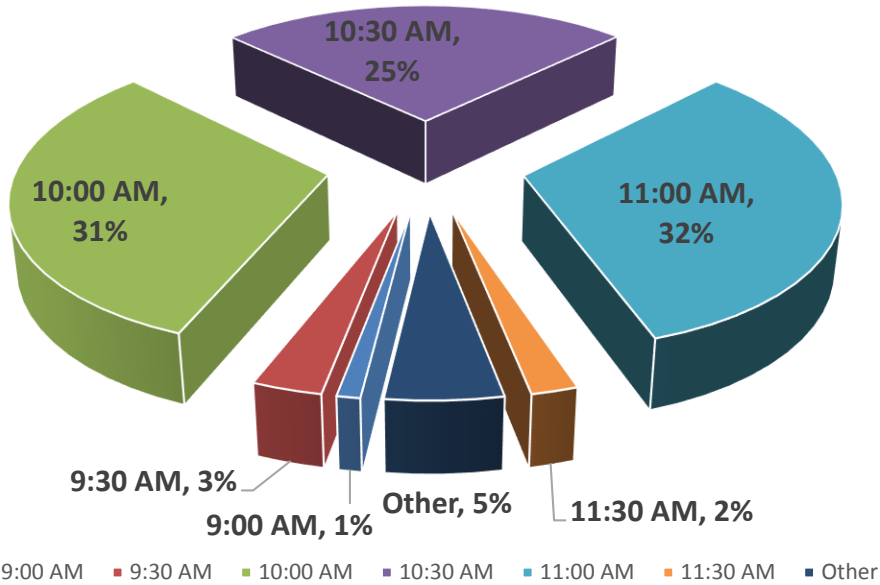
If we have two services, should they be essentially the same (as they are now) or different?



Same	60	35%
Different	47	27%
No preference	65	38%

If we were to have only one service, what time should it start?

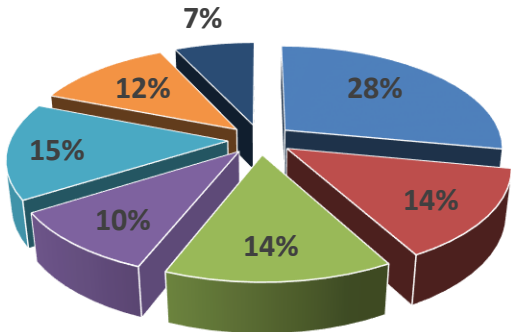
If we were to have only one service, what time should it start?



8:30 AM	0	0%
9:00 AM	1	1%
9:30 AM	6	3%
10:00 AM	57	31%
10:30 AM	45	25%
11:00 AM	59	32%
11:30 AM	4	2%
Other	10	5%

If we were to have a second service, different from the current format, what elements should be included in this different service?

If we were to have a second service, different from the current format, what elements should be included in this different service?

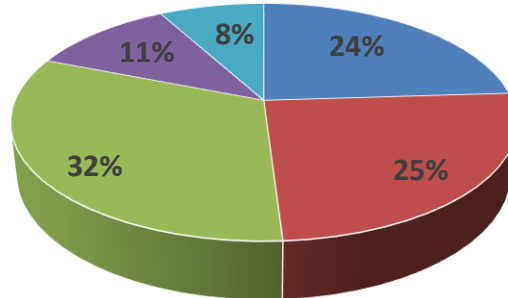


- Meditative/Spiritual
- Upbeat/Lively
- Interactive/Participatory
- Alternative/contemporary
- "out of the box" different
- Contemplative
- Other

Meditative/Spiritual	73	28%
Upbeat/Lively	35	14%
Interactive/Participatory	36	14%
Alternative/contemporary	25	10%
"out of the box" different	38	15%
Contemplative	31	12%
Other	19	7%

What audience might we want to attract to this different type of service?

What audience might we want to attract to this different type of service?

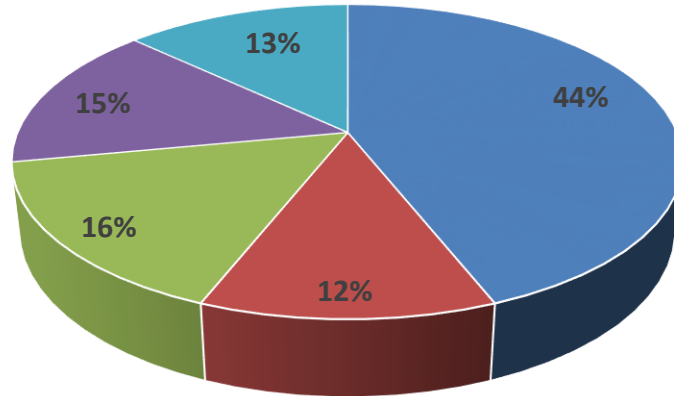


- Young Adults
 - A more diverse population
 - Other
- The Religious Nonaffiliated (The "Nons")
 - Same as our current audience

Young Adults	56	24%
The Religious Nonaffiliated (The "Nons")	59	25%
A more diverse population	76	32%
Same as our current audience	26	11%
Other	20	8%

If we were to have a different service, when should it be held"

If we were to have a different service, when should it be held

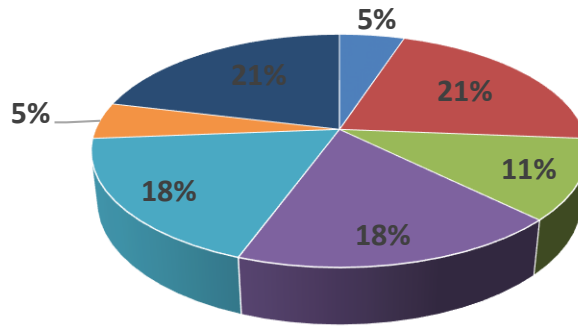


- Sunday morning ■ Sunday afternoon ■ Sunday evening
- Wednesday evening ■ Other

Sunday morning	63	44%
Sunday afternoon	17	12%
Sunday evening	23	16%
Wednesday evening	22	15%
Other	19	13%

If you'd like a different type of service, what type of spiritual tradition best describes the one you'd like to see TVUUC offer

If you'd like a different type of service, what type of spiritual tradition best describes the one you'd like to see TVUUC offer



- Jewish/ Christian
- Atheist/Humanist/Rationalist
- Eastern Religions
- Earth Affirming Spirituality
- Agnostic/Questioning/Seeking
- Quaker
- Other

Jewish/ Christian	6	5%
Atheist/Humanist/Rationalist	28	21%
Eastern Religions	15	11%
Earth Affirming Spirituality	24	18%
Agnostic/Questioning/Seeking	24	18%
Quaker	7	5%
Other	27	21%